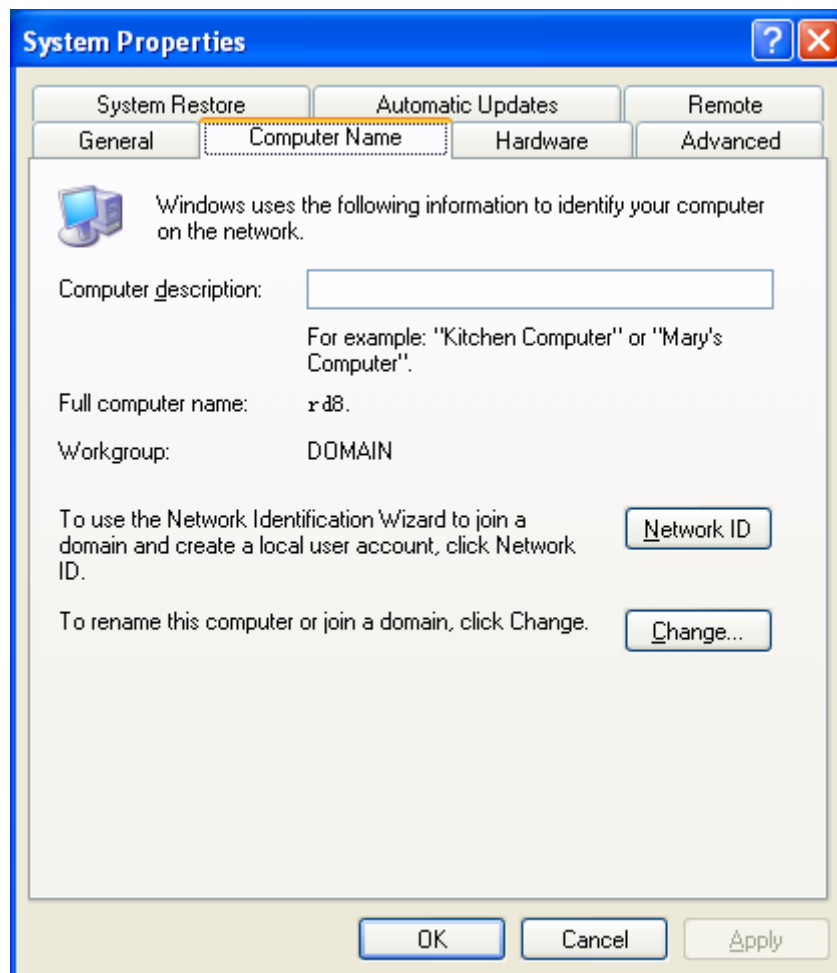
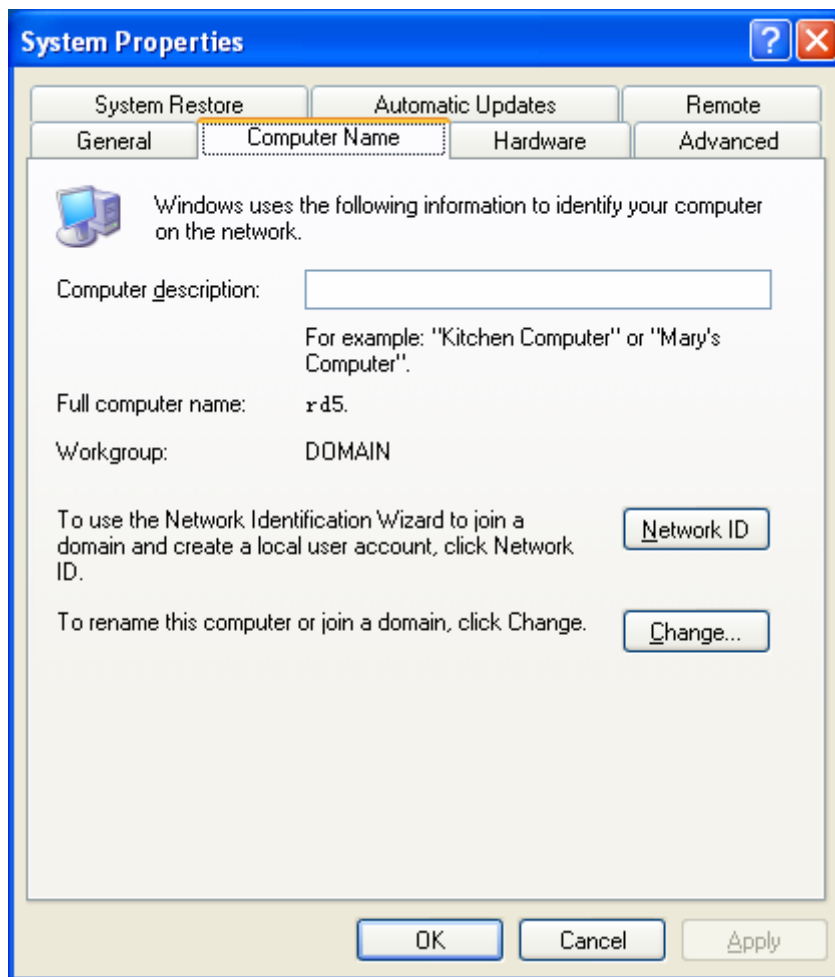


Sharing Data (instance)

Foreword:

- 1) Both computers' operating system is Microsoft Windows XP Professional version 2002 Service Pack 2
Let's call these two computers as Computer A and Computer B (Through the USB Ethernet 10/100 Adaptor to the Local Area network)
- 2) The purpose of this instance is telling you how to make two computers exchange visits and share Data.
- 3) These two computers' workgroup must be set as same, such as: DOMAIN (refer to the below chart)

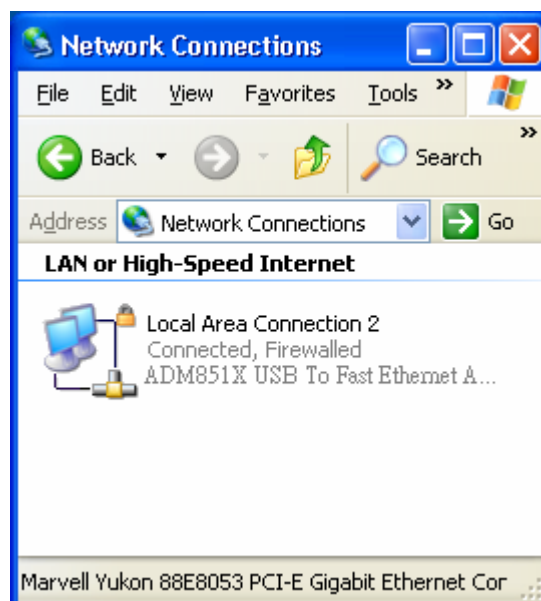




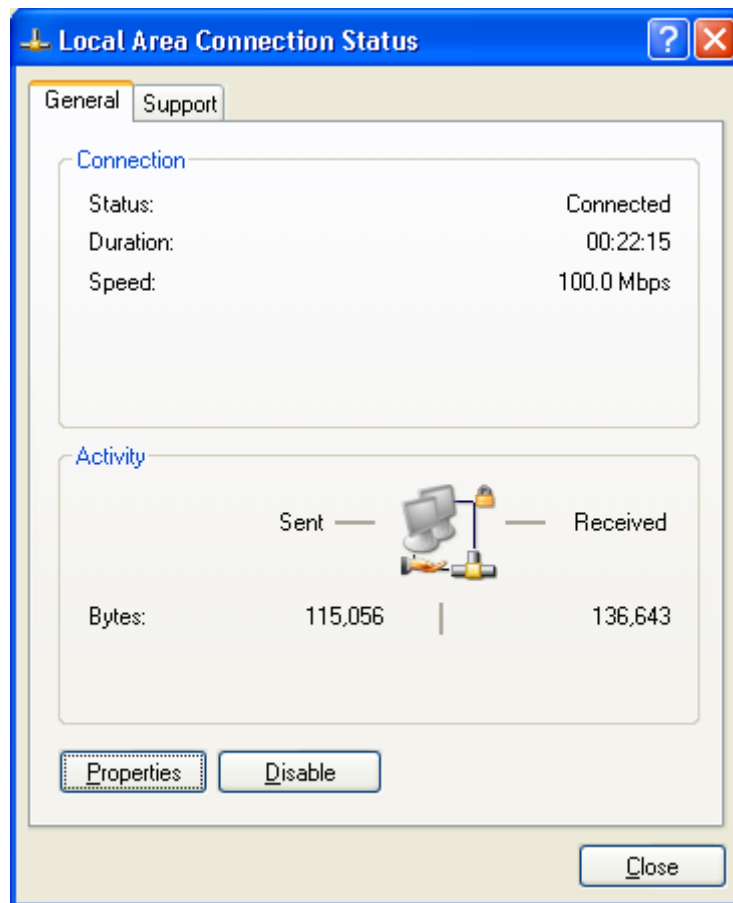
Installation and Setup for Computer A and B

(1) Install NETBEUI protocol

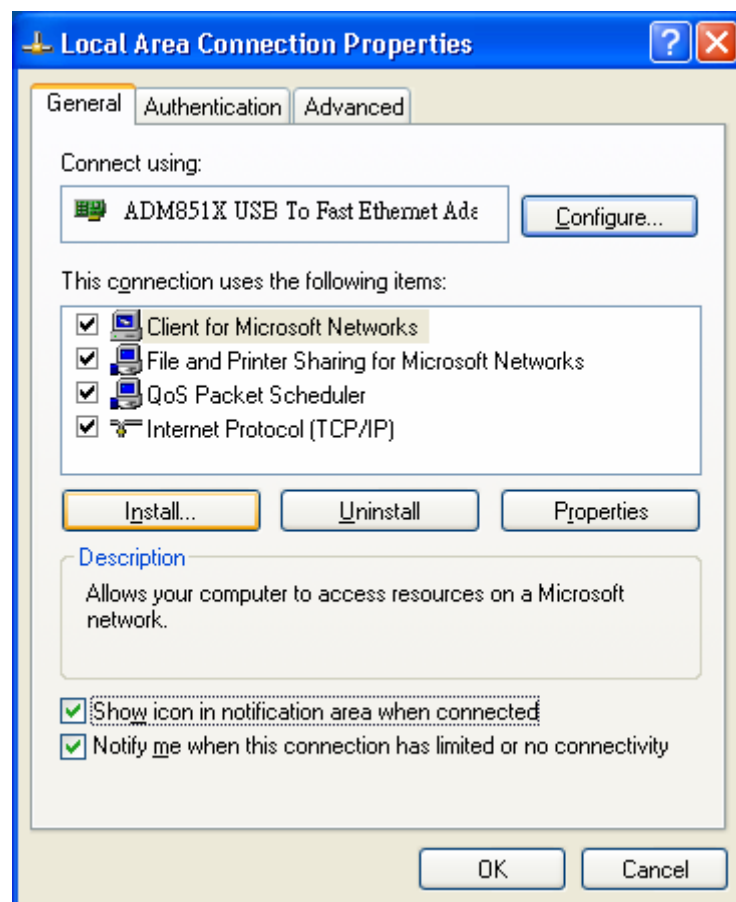
1. Open 'Control Panel' --- 'Network connections' , double click ' Local Area Connection'



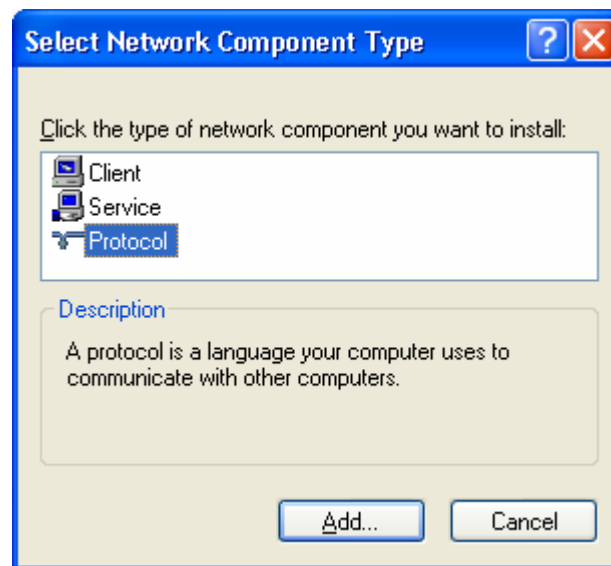
2. Click ' Properties'



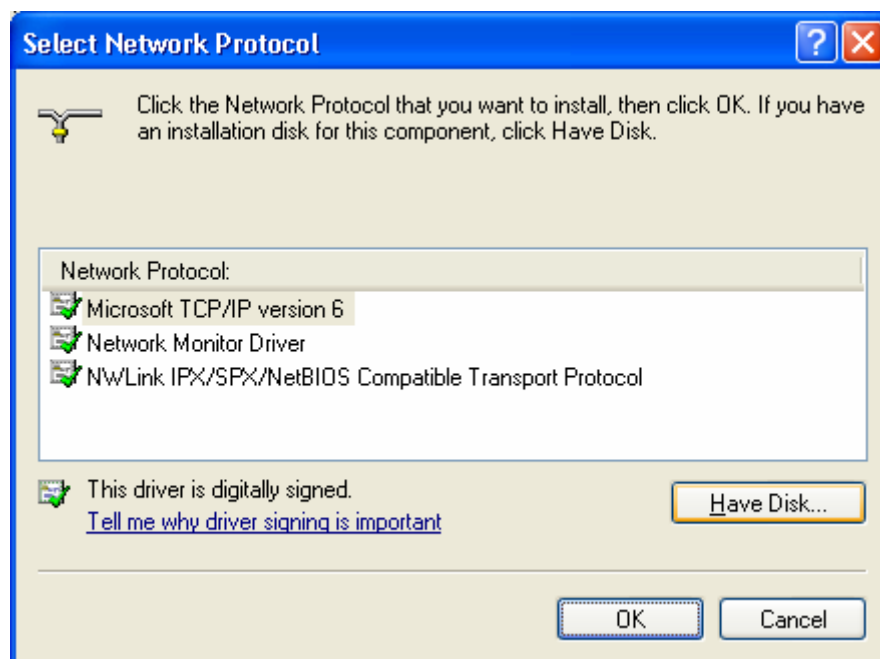
3. Click 'install ...'



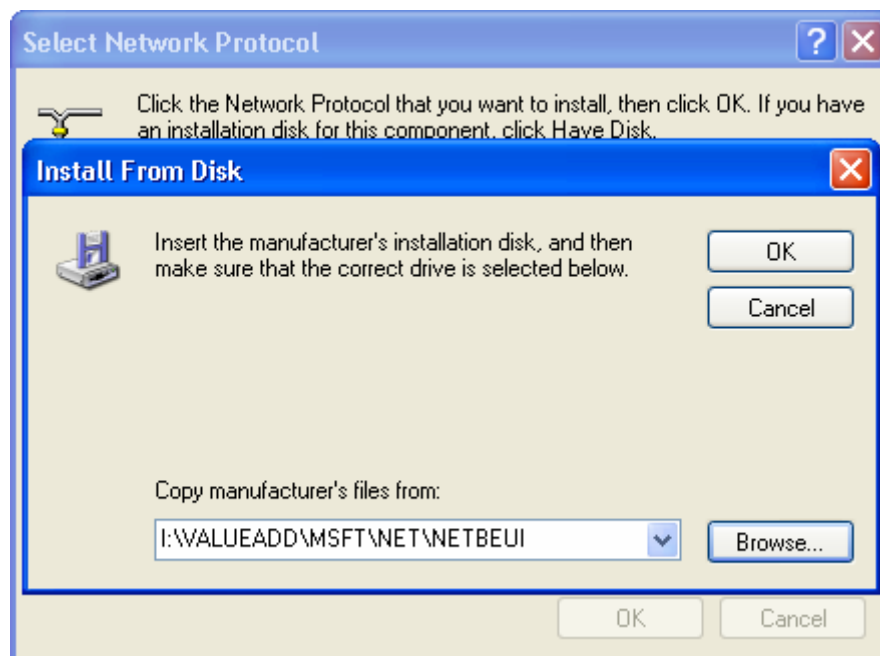
4. Select 'Protocol' and click 'Add...'



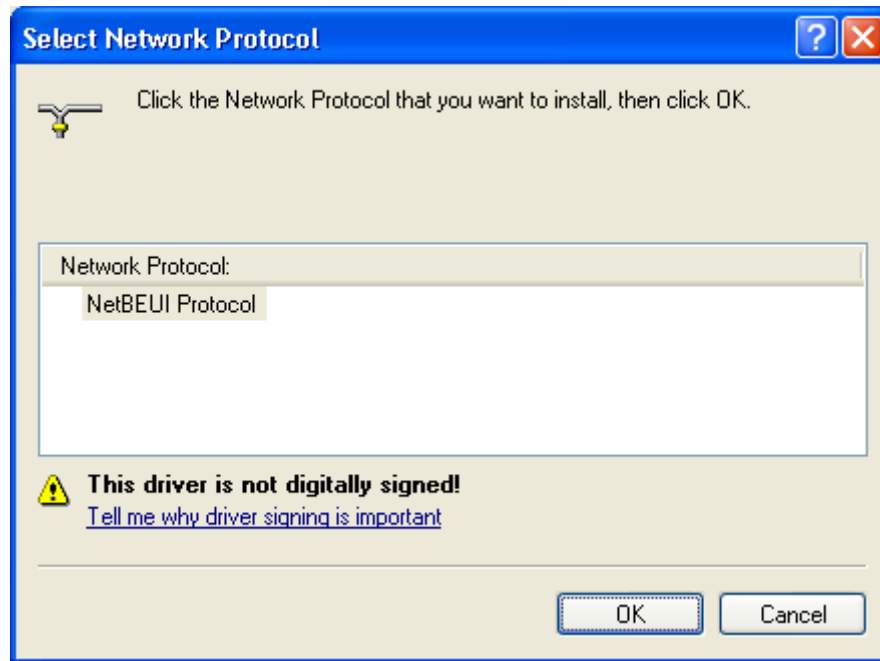
5. Click 'Have Disk...'



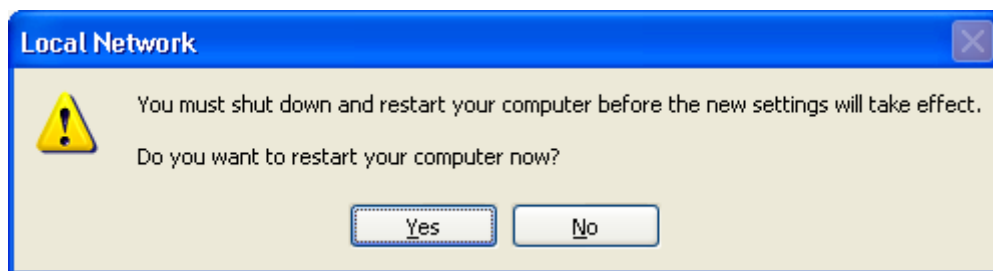
6. Click 'Browse...' , select access (system disk icon) : F: \VALUEADD\MSFT\NET\NETBEUI , click 'OK'



7. Select ' NetBEUI Protocol' , click ' OK'



8. Click 'Yes' to restart your computer



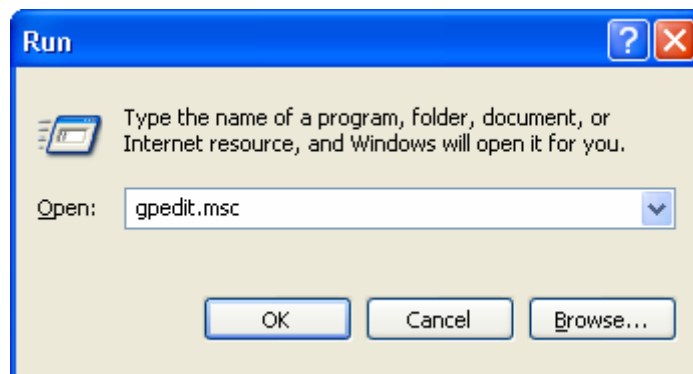
9. Completed the installation of NetBEUI Protocol

(2) Setup Group Policy

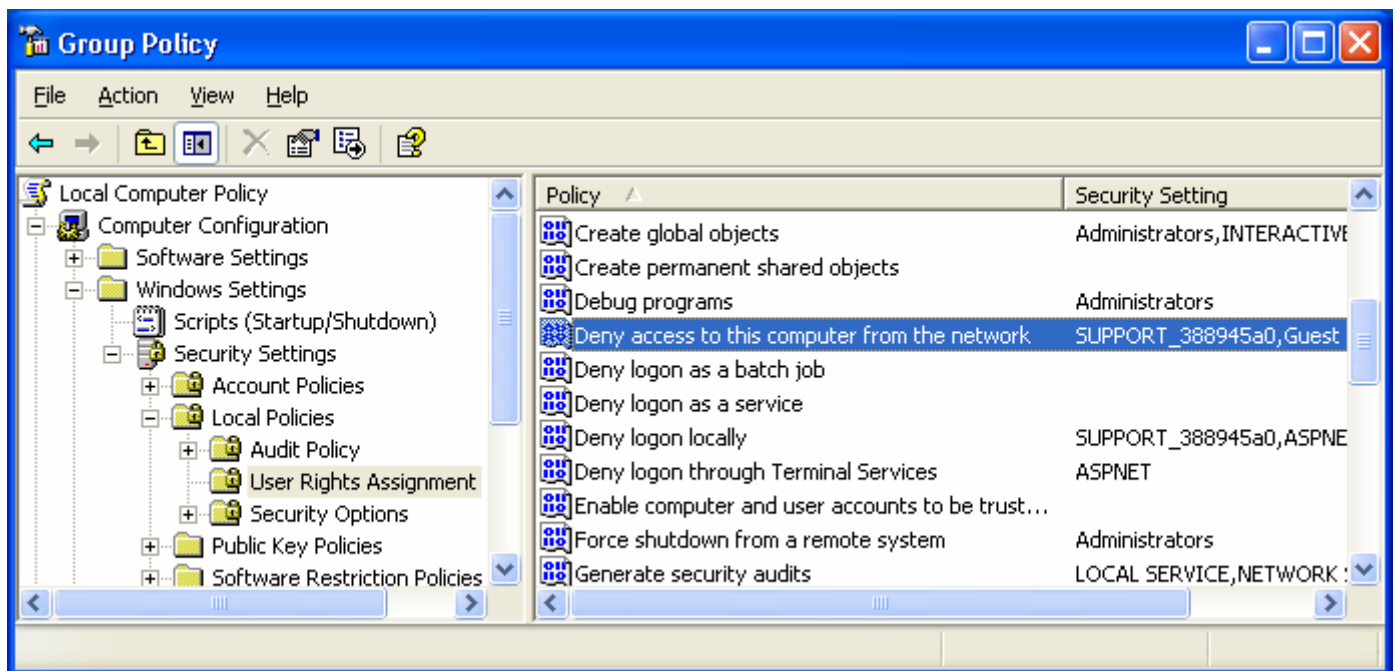
1. Click 'start , then select and click 'Run'



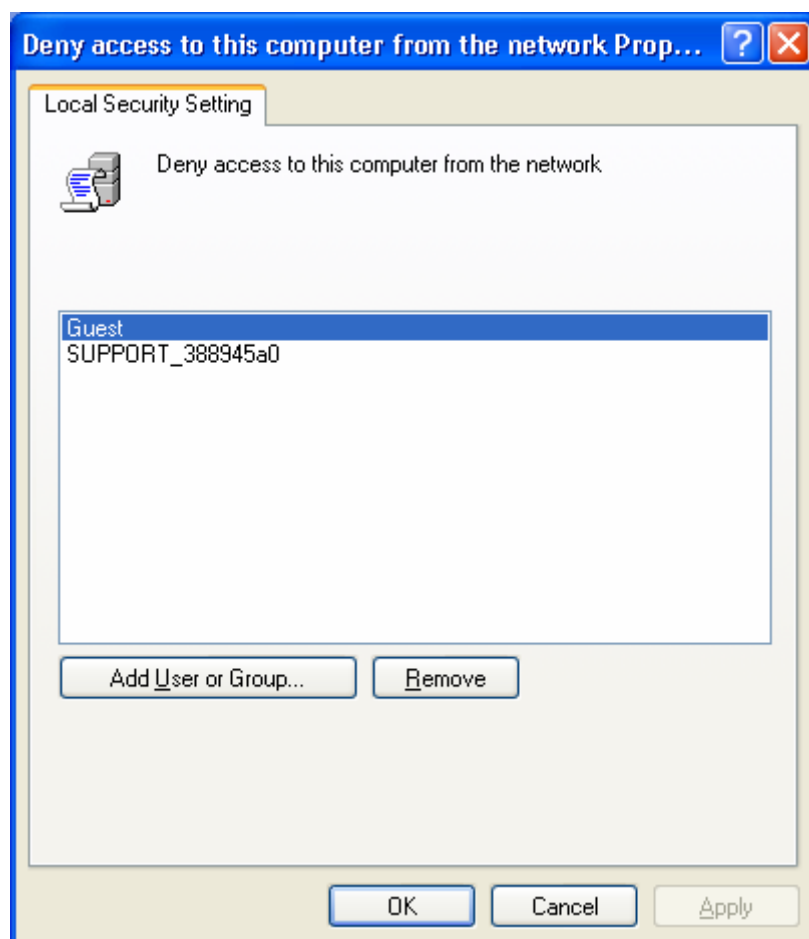
2. Key in 'gpedit.msc' , click 'OK' to open ' Group Policy '

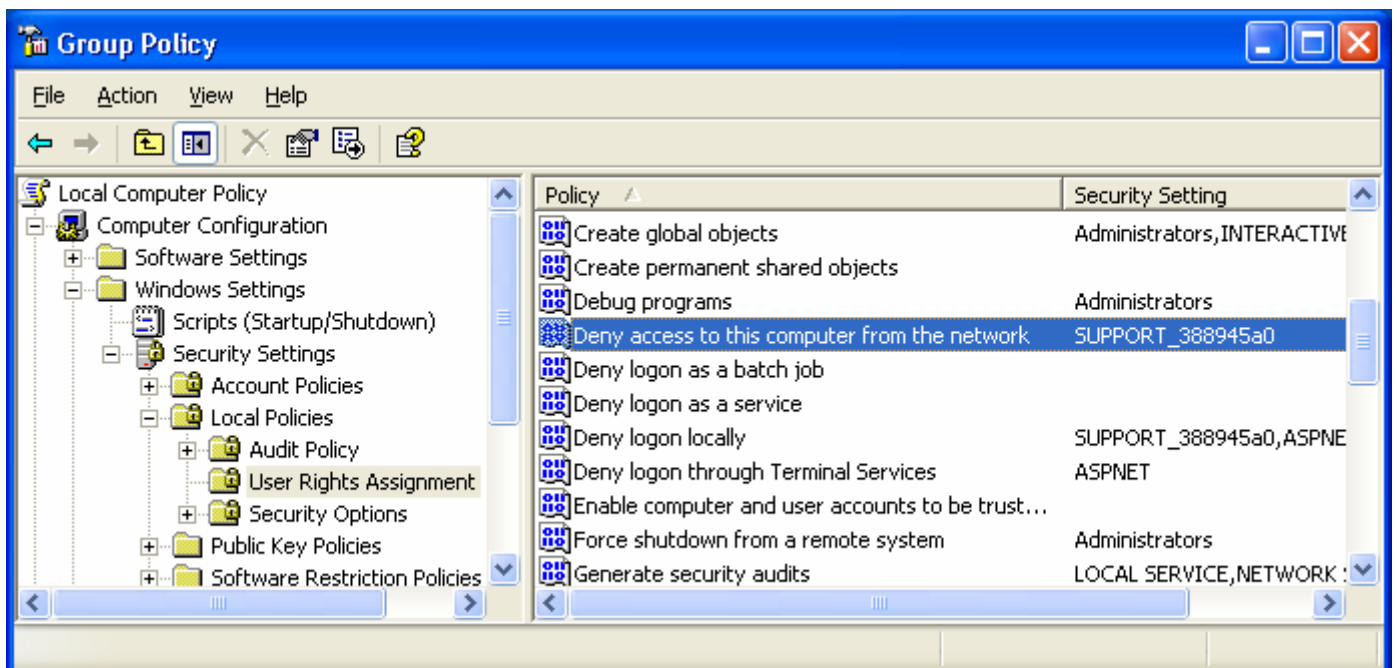
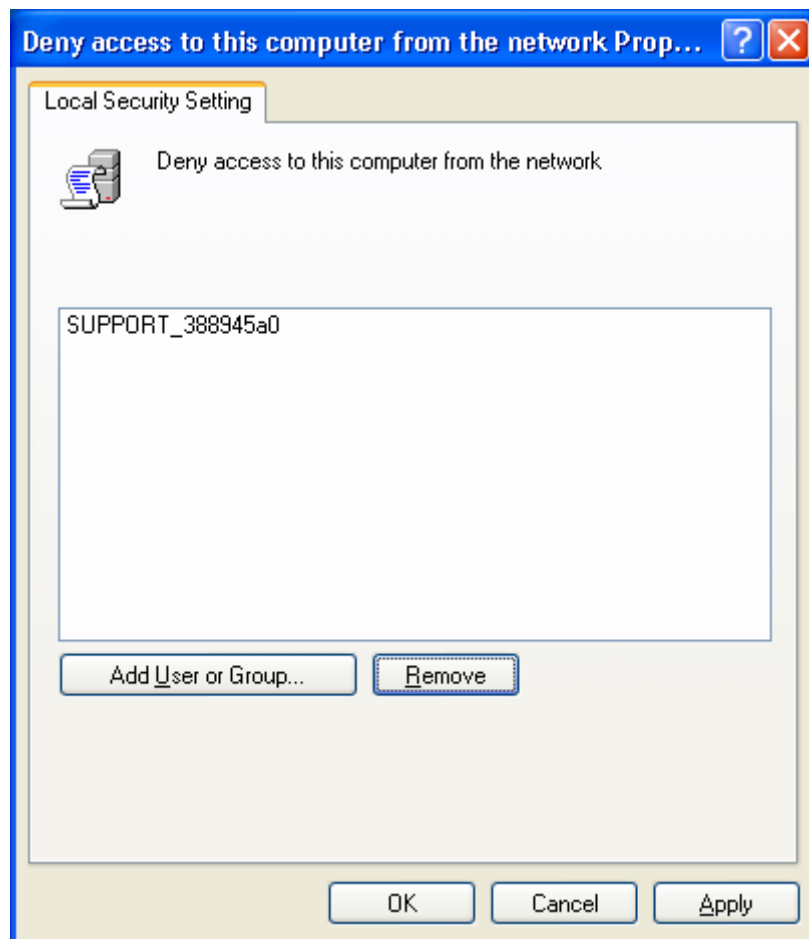


3. Enter into ' Computer Configuration ' --- 'Windows Settings' --- 'Security Settings' --- 'Local Policies'

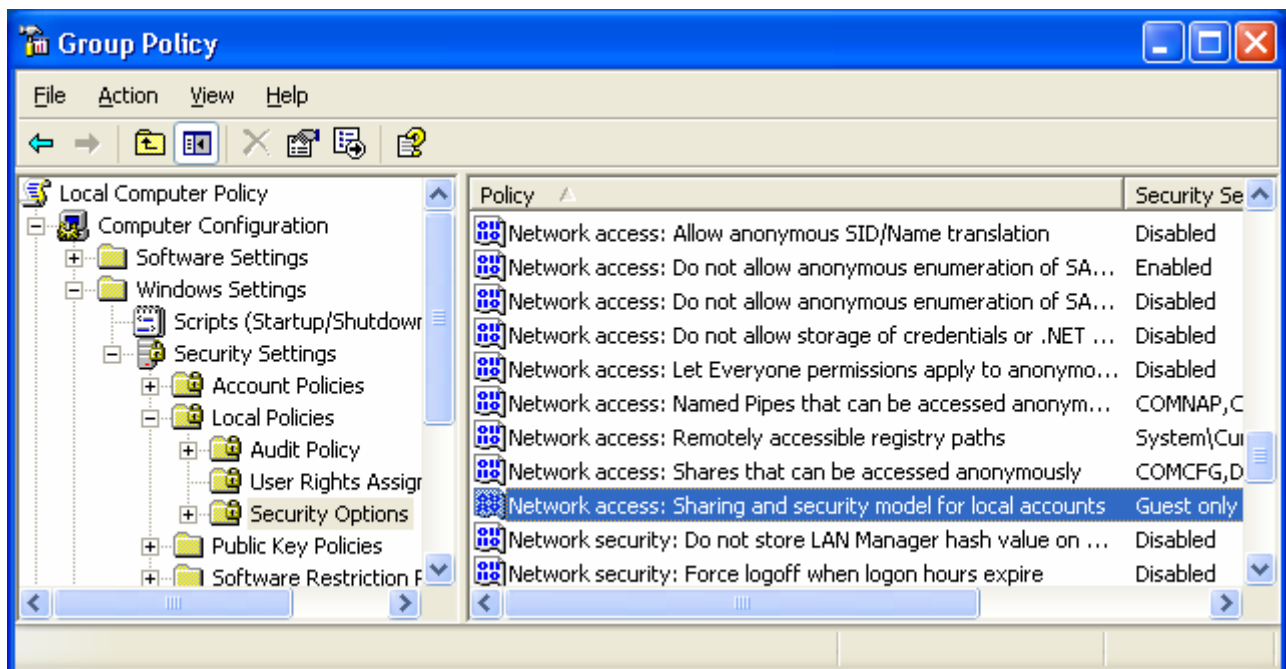


- Double click 'Deny access to this computer from the network' , then it will show the below interface , please Select 'Guest' a cancel it.

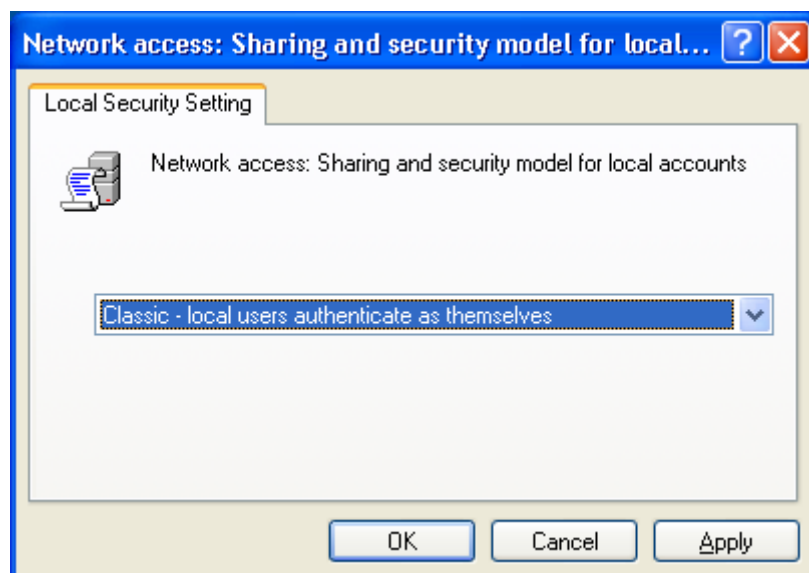
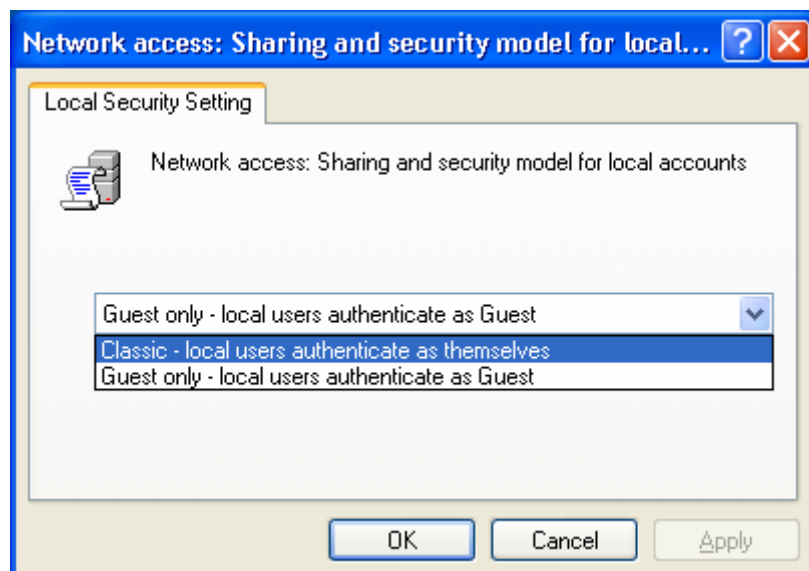


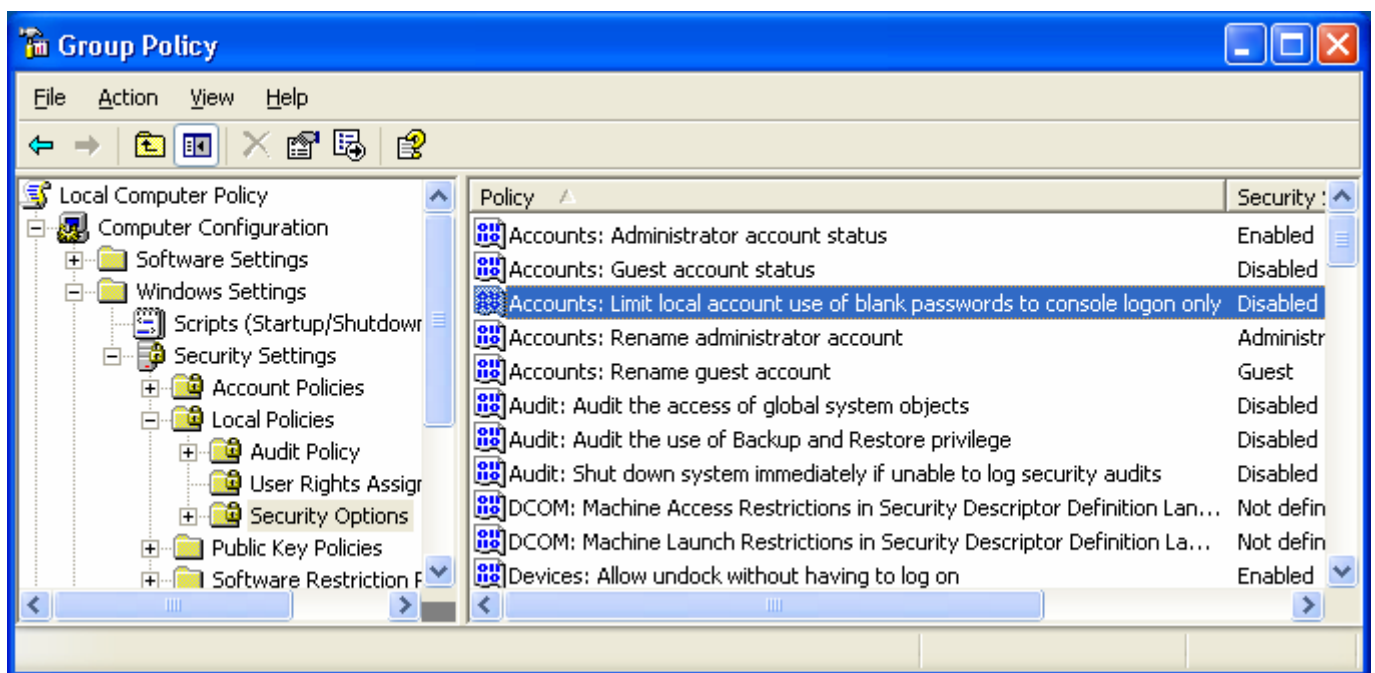
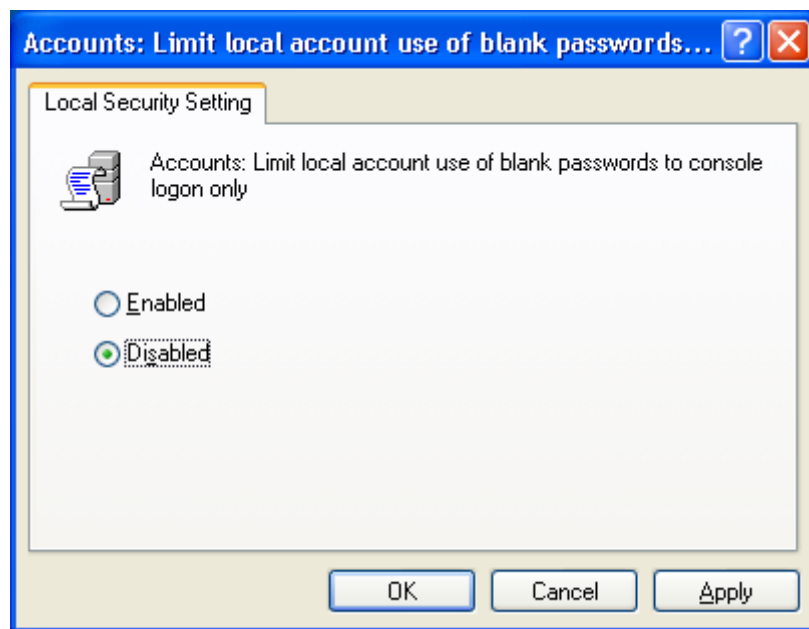


5. Enter into 'Computer Configuration' --- 'Windows Settings' --- 'Security Settings' --- 'Local Policies' --- 'Security Options' ; select and double click 'Network access : Sharing and security model for local accounts'



6. Please change it as 'Classic-local users authenticate as themselves', click 'OK'.





(3) Turn on GUEST Account

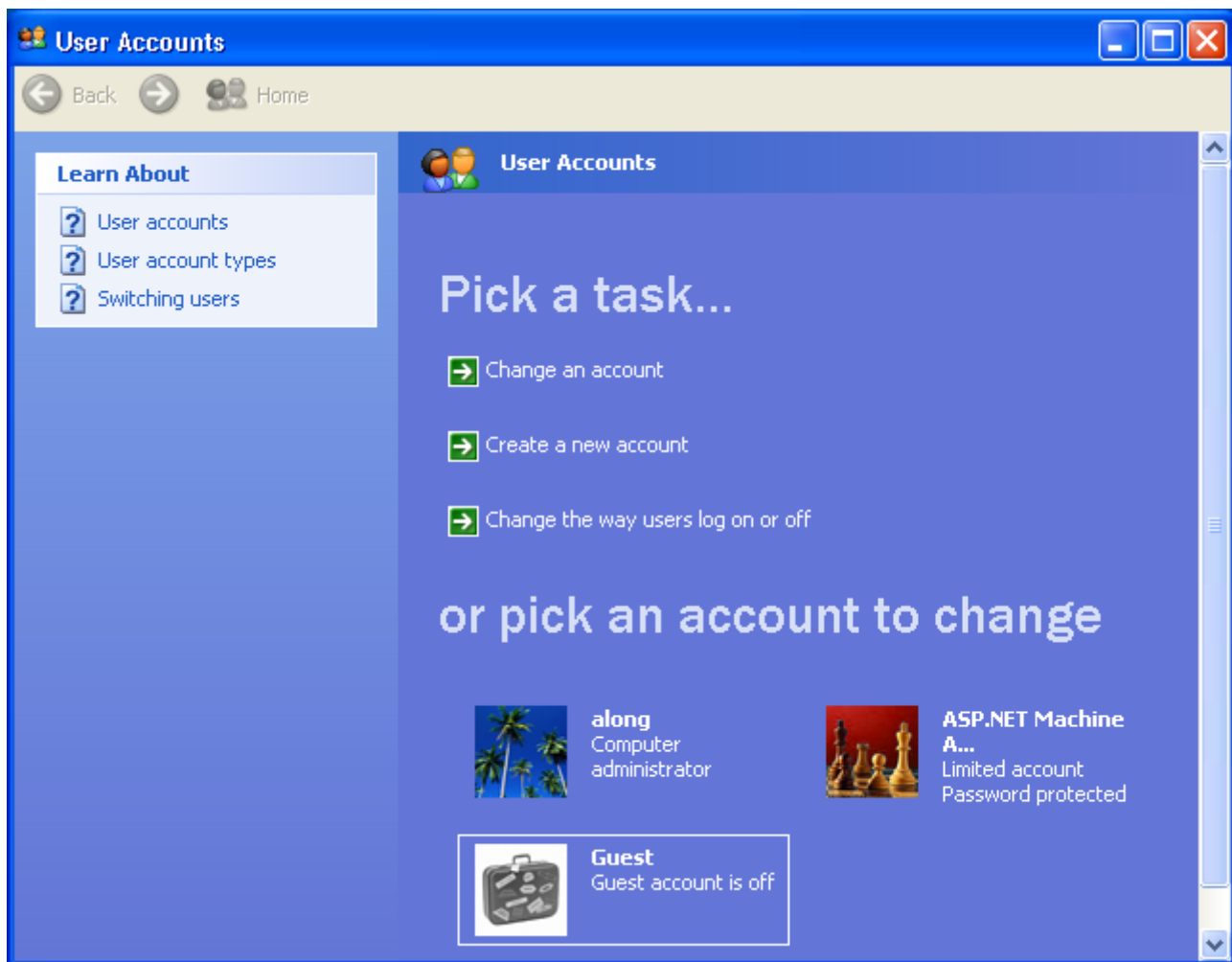
1. Click 'Start' , select and click 'Control Panel'



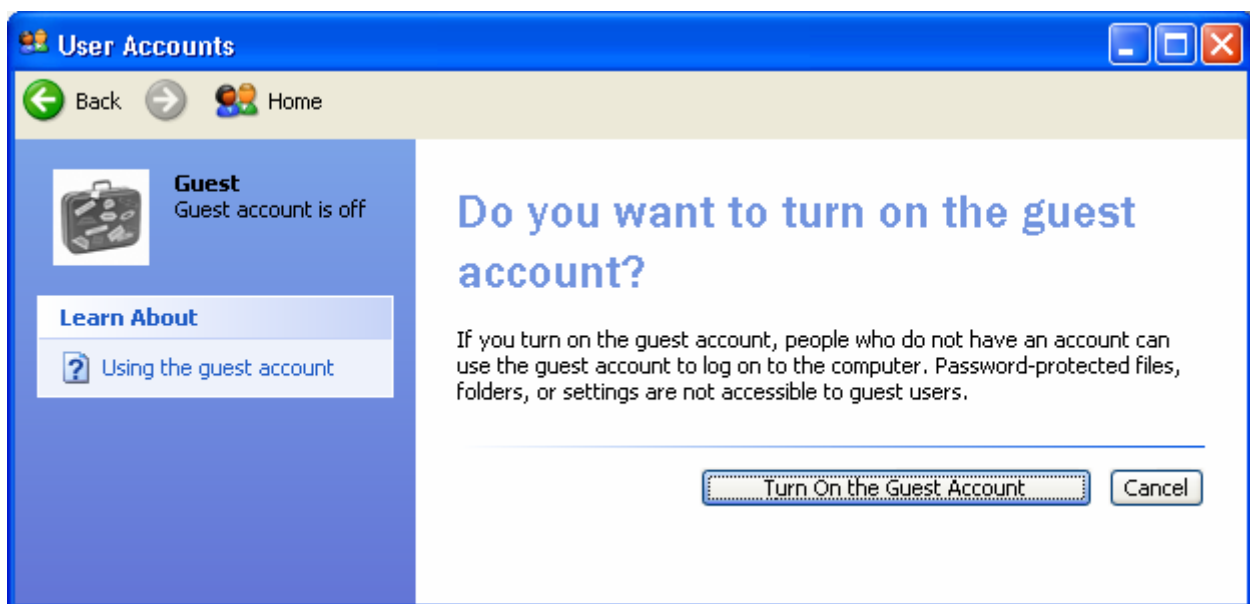
2. Double click 'User Accounts'



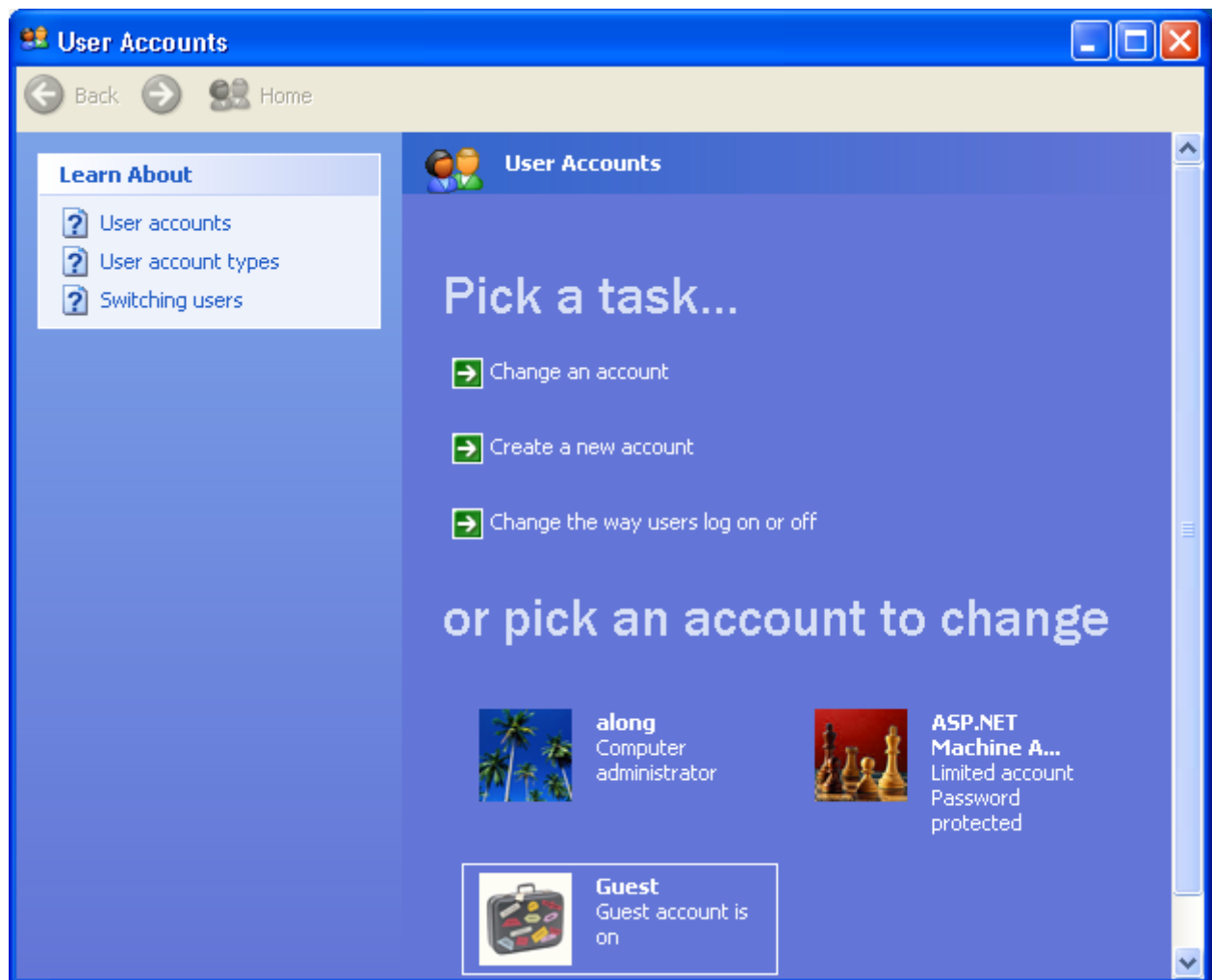
3. Select and click 'Guest'



4. Click 'Turn on the Guest Account'

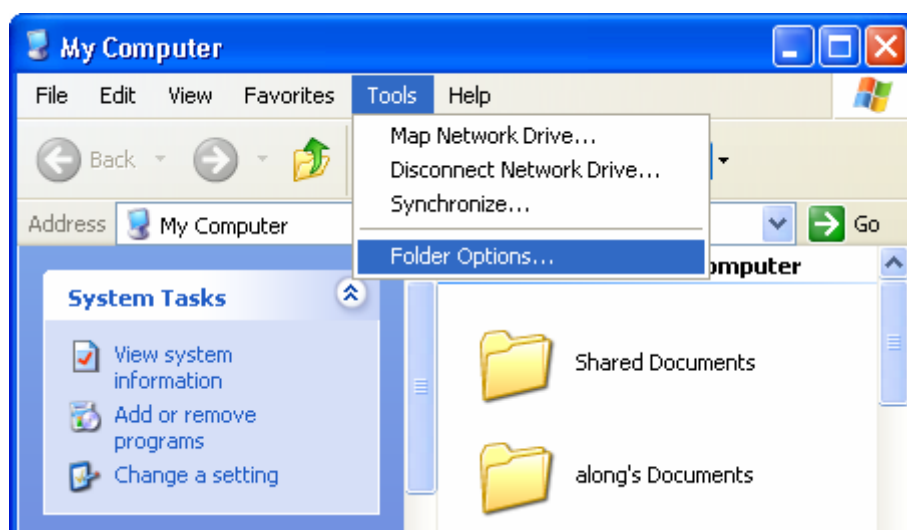


5. Guest Account is turned on

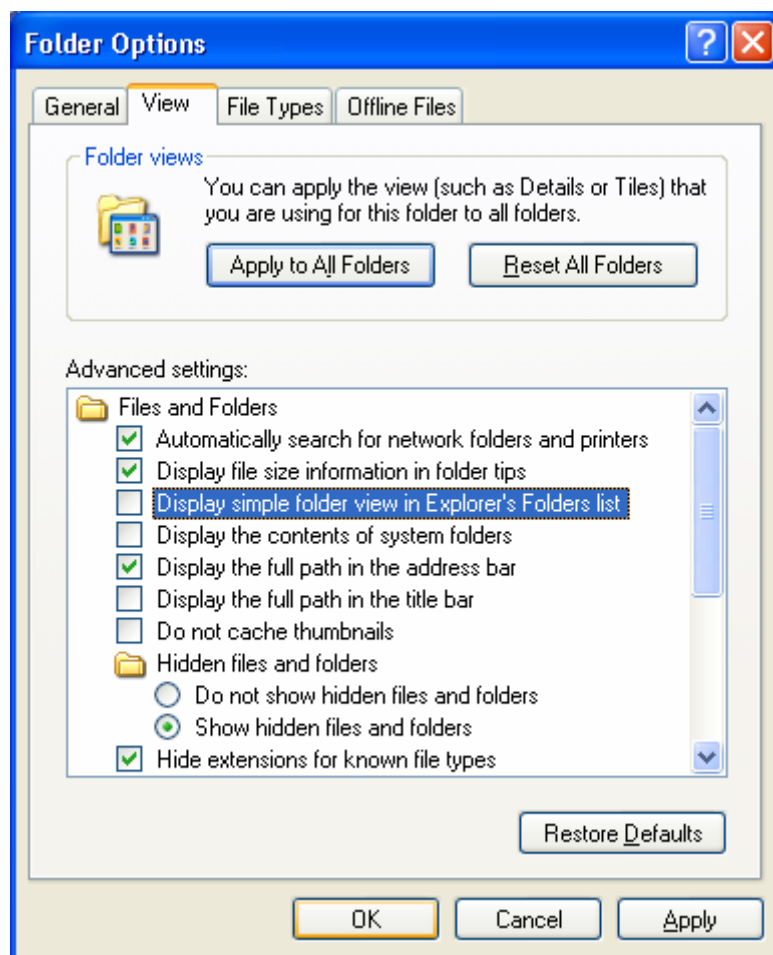


(4) Sharing Data

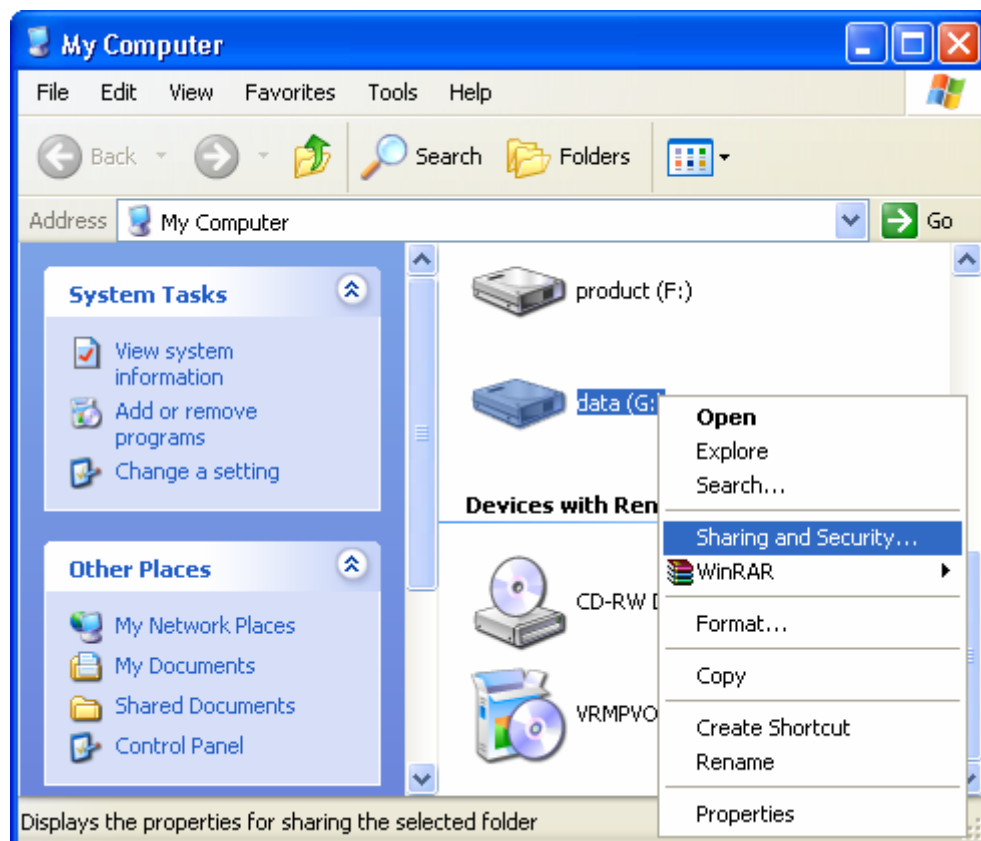
1. Open 'My Computer' – 'Tools' – 'Folder Options'



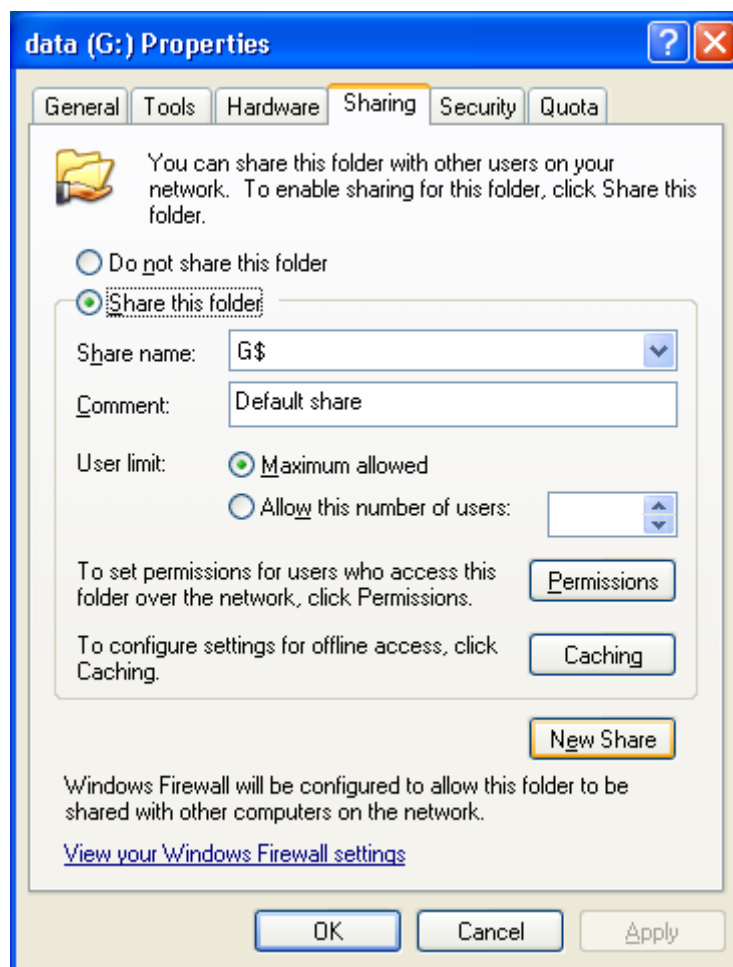
2. Click 'Display simple folder view in Explorer's Folders list' , click 'OK'



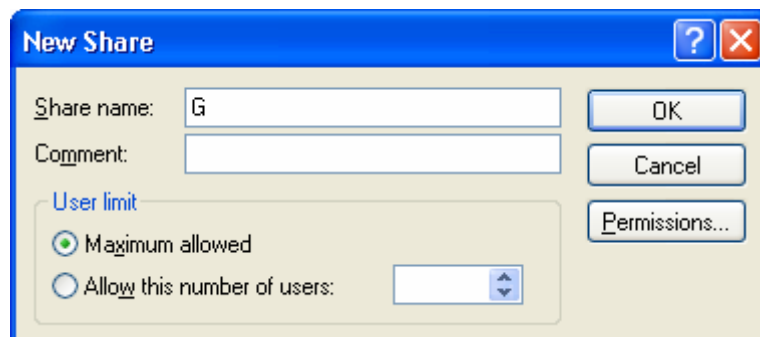
3. Click disk G with right key on your mouse, select 'Sharing and Security...'



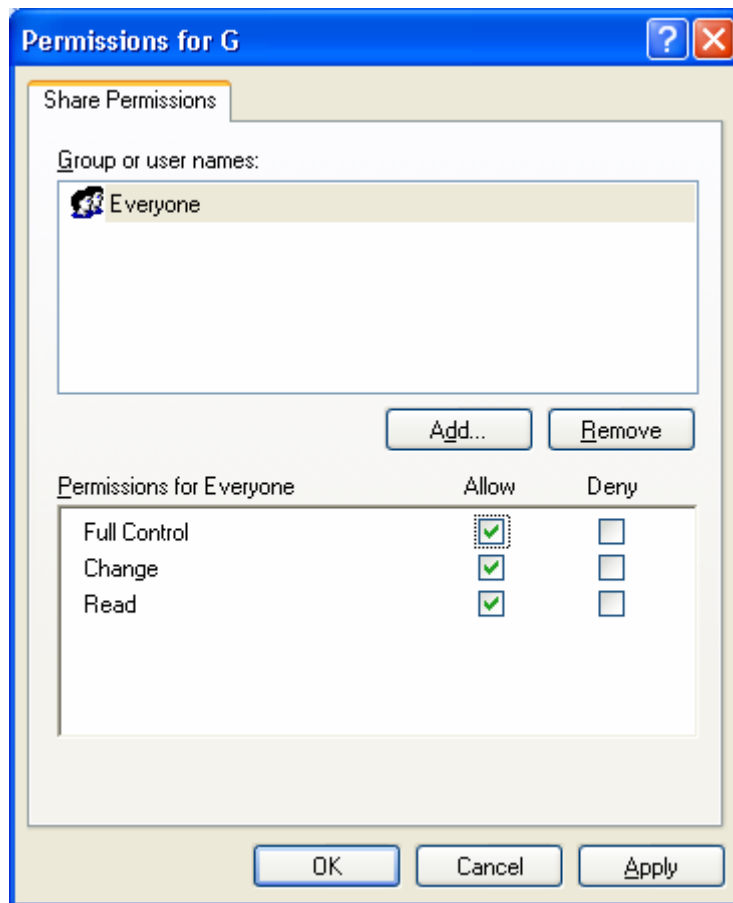
4. Select 'Sharing' , click 'New Share'



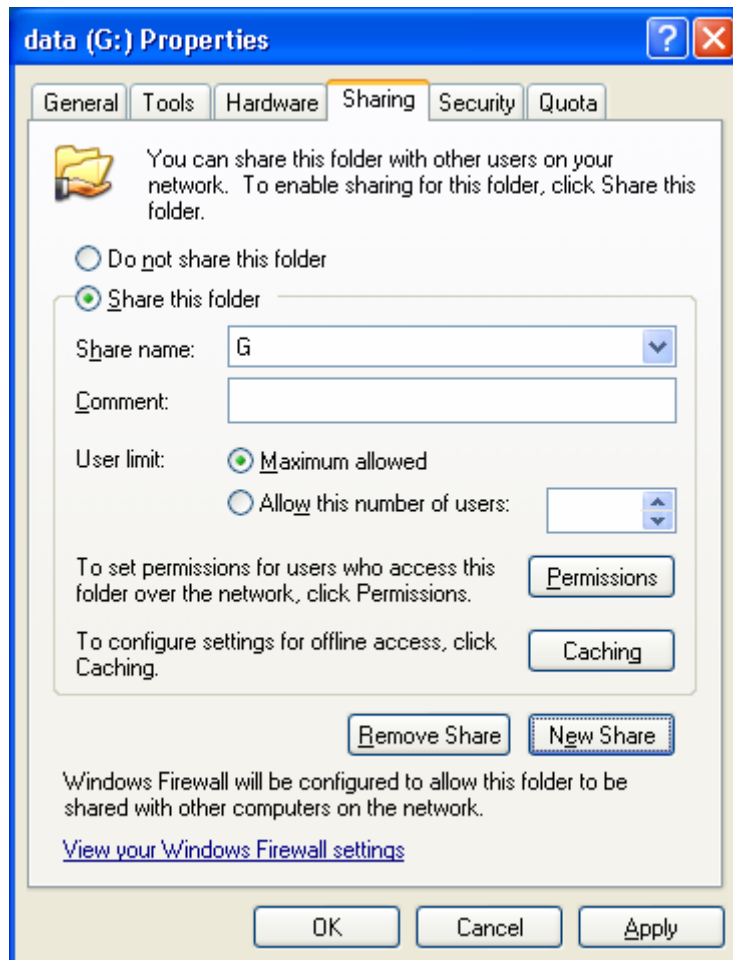
5. Key in 'Share name'



6. Click 'Permissions...' , you can set it according to yourself requirement , here , everybody can share reading and writing , click 'OK' .



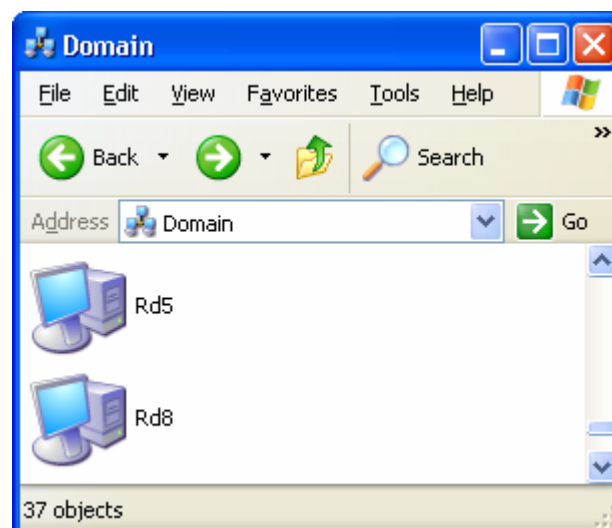
7. Click 'OK'



8. In folder of ' My Computer ' , you can find a disk icon held in the palm , which means you completed setting shareware .



9. Enter into 'Start' --- 'Neighbor in network' --- 'Check Workgroup Computer' , then you can see the computer list



10. Just open one of the computer , you can find the shareware .

